



Restoration of Hope Initiative (ROHI)

ANNUAL REPORT 2022

Impacting lives...

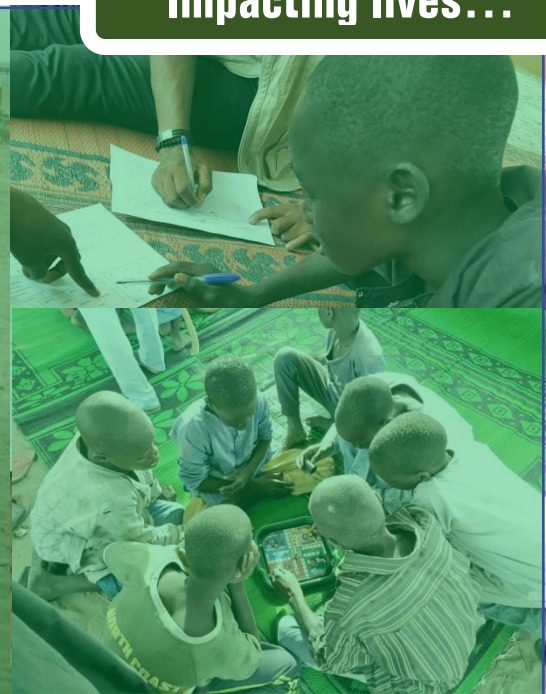


Table of contents

	Page
1. Abbreviations	1
2. Vision and mission statement	2
3. Brief about ROHI	2
4. Renewing strategy	2
5. Projects, partners, and donors	3
6. Implementing locations	4
7. Key achievements	4
8. Some pictorials	7
9. Some lessons learned	10
10. One of many stories	11
11. Connect with us	11

Abbreviations

ROHI:	Restoration of Hope initiative
NGO:	Non-Governmental Organization
GEC:	Global Education Cluster
UNICEF:	United nations children's Fund
ECW:	Education Cannot Wait
GSF:	Grow Strong Foundation
CATAI:	Center for Advocacy, Transparency, and Accountability Initiative
GPoN:	Goal Prime of Nigeria
NRC:	Norwegian Refugee Council
SC:	Street Child
OCHA:	Office For The Coordination of Humanitarian Affairs
NHF:	Nigeria Humanitarian Fund
HALI:	Hallmark Leadership Initiative
BOWDI:	Borno Women Development Initiative
GIZ:	Gesellschaft für Internationale Zusammenarbeit
USAID:	United State Agency for International Development
IRC	International Rescue Committee
AUN	American University of Nigeria
IDP	Inclusive Development Partners/Internally Displaced Persons
OTL	Opportunity To Learn
SCI:	Save the Children
MMC:	Maiduguri Metropolitan Council
LGA:	Local Government Area

Vision and Mission Statement

- ✓ ROHI envisions a global community that is free from illiteracy, diseases, and conflicts.
- ✓ ROHI's mission is to create inclusive access to quality education and social services through strategic partnerships.

Brief About ROHI

Restoration of Hope Initiative (ROHI) has operated actively in North East Nigeria, most especially in Adamawa, Borno, and, Yobe States over the past seven (7) years. Undoubtedly, the organization has made remarkable impacts on the lives and livelihoods of the people affected by the prolonged insurgency that has plagued the zone for the past 12 years. Most of the organization's interventions have been borne out of passion and commitment to ensure that the dignity of these affected people is restored, even though most of them are displaced and now reside in Internally Displaced Person camps across the region.

Renewing strategy

In the context of changing global trends and increasing demand for competencies and skills in the humanitarian and development sector, it has become of great importance for ROHI to strengthen its modes of operation. This process is helping us align ourselves with our major donor pathways and requirements. ROHI seeks to pride itself on pathfinders on keeping to and operationalizing core humanitarian values and principles of accountability to the people, we work with, work for and serve. Therefore, within the year we launched a 3-year strategic plan to demonstrate a deeper form of transparency, accountability; and in addition, build quality in our ways of doing things

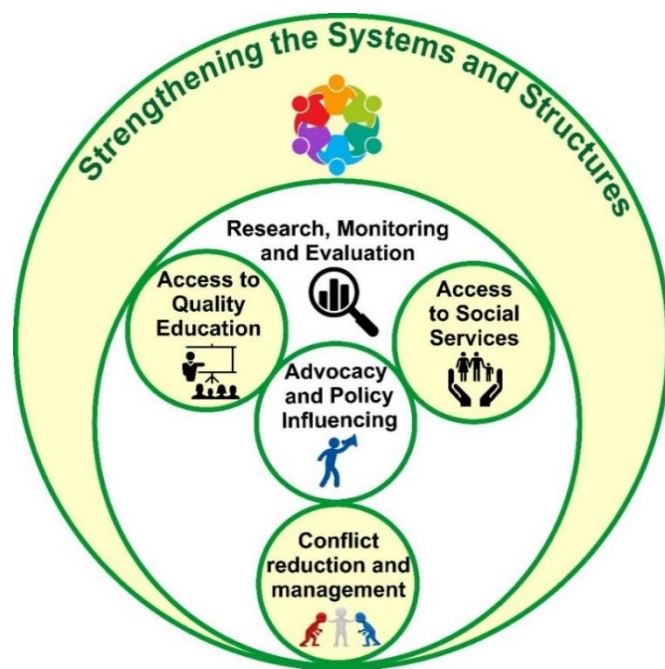
On the global scale

Beyond the leadership role that ROHI occupies in North-East Nigeria in championing policy influence and giving strategic direction in Education, the organization is one of the seven national NGOs across the world admitted on the Global Strategic Advisory Group of The Global Education Cluster Steering Group which is composed of representatives from the Cluster Lead Agencies where UNICEF and Save the Children are the GEC's governance and oversight body. As a National NGO, ROHI has been able to help GEC in bringing community perspectives to their intervention and strategic direction in providing quality access to Education in Emergency in a way and manner that meet the needs of the people as well as responding to their realities in a dignifying manner with unique innovative approaches.

The six (6) Strategic themes

- 1) **Access to Social Services**
- 2) **Conflict reduction and management**
- 3) **Access to Quality Education**
- 4) **Advocacy and Policy Influencing**
- 5) **Strengthening the Systems and Structures.**
- 6) **Research, Monitoring and Evaluation.**

How the Themes Relate



Projects, Partners and Donors

We journeyed through the year with:

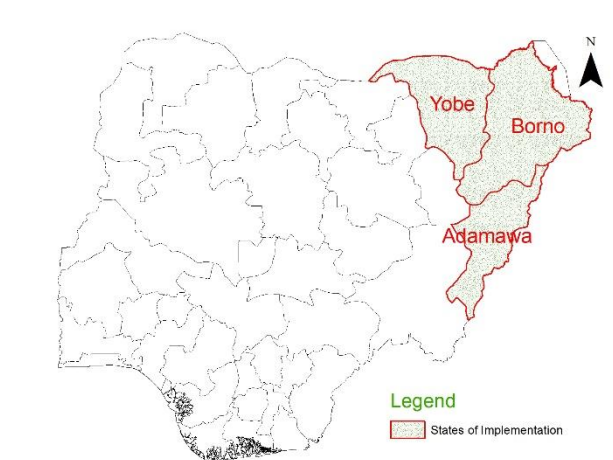
S/N	DONOR	PARTNERS	PROJECTS
1	ECW	UNICEF, GSF, CATAI, GPoN, STREET CHILD, NRC	ECW-UNICEF, ECW-NRC, ECW-SC
2	OCHA	PLAN INTERNATIONAL	NHF-EDUCATION, NHF PROTECTION
3	MALALA FUND	HALI, BOWDI	MALALA
4	BEIERSDORF	PLAN INTERNATIONAL	BEIERSDORF
5	GIZ	STREET CHILD	GIZ
6	USAID	IRC, PLAN, AUN, IDP	OTL
7	GPE	SAVE THE CHILDREN	SCI-GPE

Implementing Locations

Local Governments in Adamawa state: *Girei, Yola North, Yola South, Michika, Mubi North, Mubi South, Michika, Maiha, Madagali.*

Local Governments in Borno state: *Maiduguri, Dikwa, Monguno Damboa, Jere, Konduga, Monguno Gwoza, and MMC*

Local Governments in Yobe state: *Gujba, Damaturu, Potiskum, Bade, Fune, and Jakusko,*



Key Achievements

The following are our key achievements in the year 2022

Paid advocacy visits to relevant stakeholders towards policy influencing 23 times.

23



1000
[950 F, 50 M]

Facilitated inclusive Income Generating Activities for 1000 vulnerable population

Provided awareness and kits for menstrual hygiene management to 2,300 adolescent girls and women

2,300



3

Provided 3 boreholes (water source) for vulnerable people.

Established and supported 20 hygiene groups to maintain good hygiene practices

20



32

Constructed/rehabilitated 32 latrines to promote hygiene.

Provided child protection services to 310 vulnerable children

310

[178 boys, 132 girls]



2,720

[960 men, 1760 women]

Supported 2,720 parents to provide positive parenting to conflict-affected children

Improved the capacity 211 persons to provide MHPSS/PSS services.

211

[127 men, 84 women]



7

Held 7 meetings to engage the public and private stakeholders towards conflict reduction

Provided education and learning materials to 39,900 learners and teachers

39,900
[19,954 males,
19,946 females]

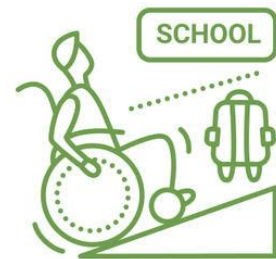


16

Constructed and rehabilitated 16 learning spaces/classrooms.

Built the capacity of 5 children who had special need (Disability).

5



9

Conducted 9 researches/assessments towards learning

Aired 22 radio programs on topics geared towards humanitarian and developmental responses

22



SOME PICTORIALS



Radio Broadcast



Safe School Declaration Stepdown Trainings



Psychosocial Support for Vulnerable Children



Sensitizations and Awareness Raising



More on Psychosocial Support for Children



Girlchild Development



Assessment of Children's Knowledge



Development of Video and Audio lessons for Learners

Photo credit: all photos were snapped by various ROHI project staff during implementation.

Some lessons learned

For schools in many IDP camps, children are the ones who make money for their families by hawking. Some children don't wait for school to end before going to hawk, and others sometimes choose not to go to school, which raises safety concerns and affects learning process.

The 2022 flood had a devastating impact on learning centers, because it displaced families from their shelters, destroyed means of livelihood, exposing households to safety risk. These interruptions resulted in a loss of instructional time and prevented students from completing their lessons as planned.

Training for teachers would be more effective and proper during holidays, to avoid doing harm to the children's learning by pulling out teachers from classrooms when they are supposed to be teaching the children.

The farming season had a significant negative impact on IRI session attendance in the second and third quarters of 2022. Children work long hours in the fields, leaving little time for schoolwork. In some cases, children may be forced to drop out of school entirely to assist their families on the farm. As a result, attendance has decreased significantly, as seen in Girei LGA of Adamawa state

A change in audio lesson storage device has enabled educators to create interactive and engaging learning experiences for learners in which they can interact with the content and with each other by storing more content at once. This has helped students stay motivated and engaged while also improving their understanding of the material.

Working with already existing community structures improves child protection response in the community to lessen the vulnerability of conflict-affected children. Engaging such structures has helped us find assistance in terms of foster parent placement and in getting references to protection cases.

One of many stories

A Rescued Family

Muhammed Hussain is a 42-year-old Shuwa dialect man living in Dikwa town. He was internally displaced (IDP) from Gagibo village and is one of the participants in the positive parenting sessions. Mohammed made the following confession during an interaction with our team members: “I was going through a period of stress, worry, and anxiety about my son’s challenging behavior towards his younger sisters. I hardly had time for my family and was getting exhausted with life. However, your positive parenting sessions helped me address the matter carefully, with very visible improvements. The situation is different now; I now have time for my family, which has strengthened our family bond hugely and we are much more connected and resilient. I’m so glad we have reached this point and feel much happier and reassured about my parenting. ROHI also trained me on Family Business Scheme and supported me with a cash grant to start a business from which I support my family and contribute to my community. Thanks to ROHI, for saving my life and that of my family.”



Connect with us

